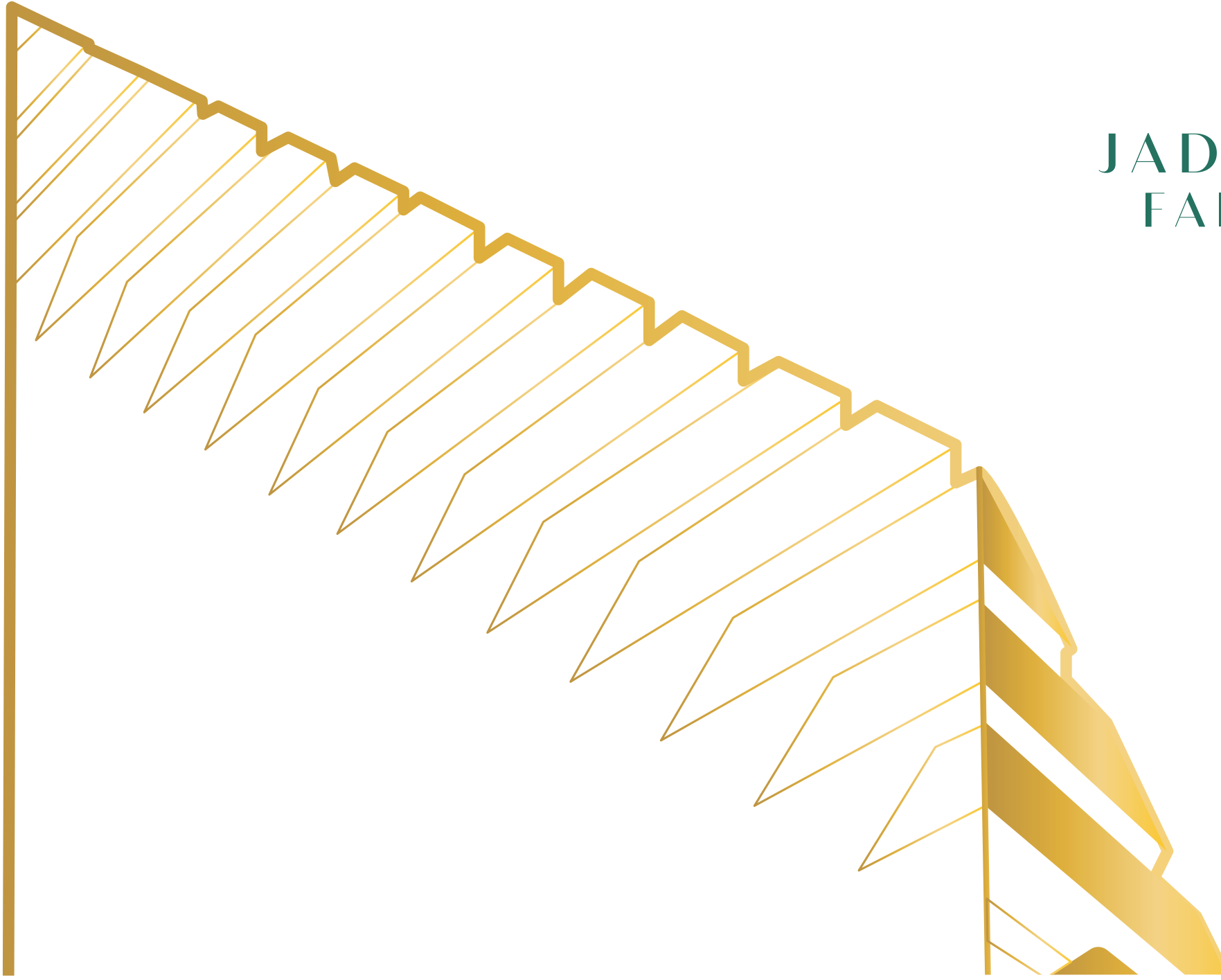


JADE HEIGHTS  
FAISAL TOWN



Jade

4 Heights



FAISAL TOWN  
ISLAMABAD

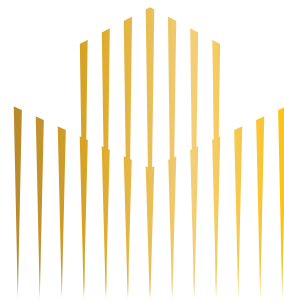


A PROJECT OF



Your Vision Our Logic

WELCOME TO



JADE HEIGHTS  
FAISAL TOWN

Welcome to the city of Islamabad, the land of beauty and serenity. The majestic mountains surrounding this city attracts people to experience the tranquility it provides. Being the ideal place to start your life and experience luxury like never before, Islamabad has established itself as a holy ground for real estate development projects and businesses. Understanding the opportunities that lie in the city, we successfully ventured to develop Jade Heights.

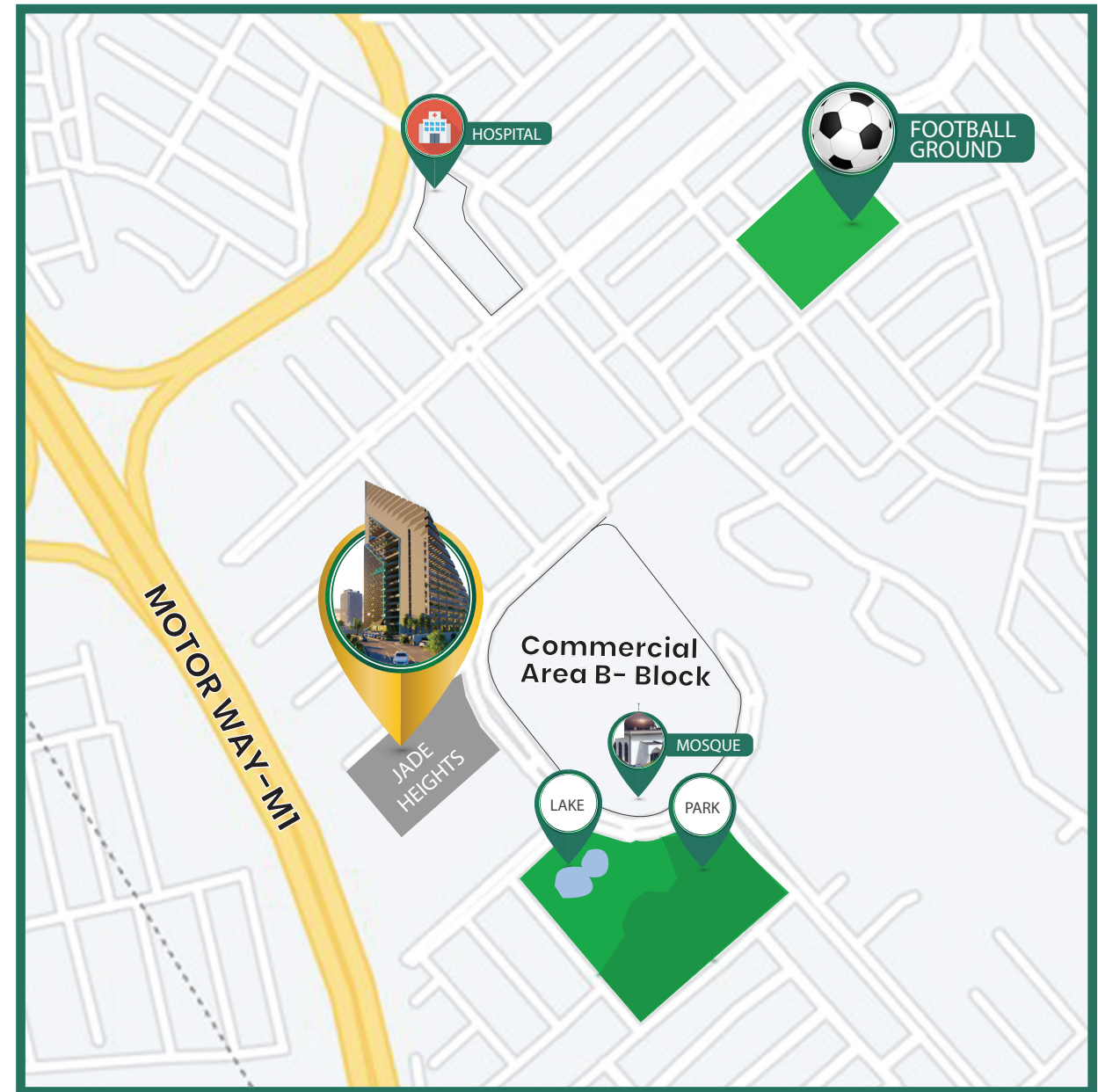
Jade Heights with its luxurious 1, 2 & 3 Bedroom residential apartments guarantees a high standard of living for residents. We, at Jade Heights, are going beyond the norm to ensure your safety and living are of the highest quality. We aim to manifest your dream home and lifestyle into reality because we aim to redefine luxury, worthy of our resident's standards of living.



# LOCATION

Located in the heart of Faisal Town, Jade Heights promises residents a refreshing and new approach to modern living. Keeping the needs and wants of the people in mind, Jade Heights is in close proximity to tremendous project amenities such as; hospitals, schools, mosques, banks, a football and cricket ground. The 8.6-Kanal, 28 storey building of Jade Heights lies a 2-minute drive away from M-1 Motorway, Fateh Jang Interchange, and an 8-minute drive to Islamabad Int. Airport provides a picturesque view of Margalla Hills. We, at Jade Heights, understand what the residents and potential apartment buyers want and cater to their needs, and go above and beyond to ensure that no stone is left unturned to successfully establish a beautiful green space that checks off.

The close proximity to M-1 Motorway, and Srinagar Highway enable easy commute for residents. The apartments of Jade Heights are a class of their own. With state-of-the-art facilities and modern architecture, jade Heights hosts a style that surpasses imagination. With the lavish lifestyle and bright interior of the space, the residential complex atmosphere will prove to be a break from the stresses of daily life.



2 Minutes  
M-1 MOTORWAY



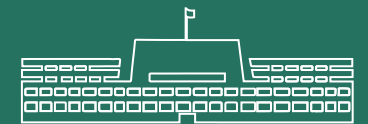
10 Minutes  
CPEC INTERCHANGE



8 Minutes  
NEW ISLAMABAD  
INTERNATIONAL AIRPORT



20 Minutes  
ZERO POINT



25 Minutes  
BLUE AREA ISLAMABAD



Faisal Town Islamabad is a gated residential community offering a portfolio of luxury living, accessibility to amenities, and a chance to bring your dream home into existence. Faisal Town is a project by Zedem International (PVT.) LTD is built on the vision and aspirations of the CEO Ch. Abdul Majeed to deliver quality. The community is situated on main Fateh Jang Road right next to Fateh Jang Interchange on Motorway M-1.

Faisal Town is the best choice for you to fulfill your dream of luxury living with safety and the latest amenities being easily accessible. The project is located in an optimal location, in close vicinity to the beautiful city of Islamabad, and boasts a breathtaking view with peace and tranquility. The beautiful residential community with its magnificent and future-centric approach to architecture and modern living makes it a paradise on Earth.

# FAISAL TOWN ISLAMABAD

“We design for the present, with an awareness of the past, for a future which is essentially unknown.”







# SALIENT FEATURES

- Eco friendly, Green & Smart building
- Corner Plot, 3 Sided Open View
- Beautifully designed common green area
- Two Floors indoor Car Parking
- Backup power for common area
- Reliable passenger & Cargo elevators
- Top-class fire & security system
- Adjacent to park, hospital, commercial block & community center
- Unit upkeep services for absentee residents
- Management and maintenance to remain with Matrix Builders
- Cash & Carry for Residents
- Service walkway
- Hotel Lobby

# WORLD CLASS AMENITIES

## *Dream Lifestyle*

To meet the ever-expanding needs of a modern metropolis, these facilities will be available. There is a sports court, soothing and relaxing spa, a pool, high-end gym equipment, a kid's area, spacious parking and much more on the premises.



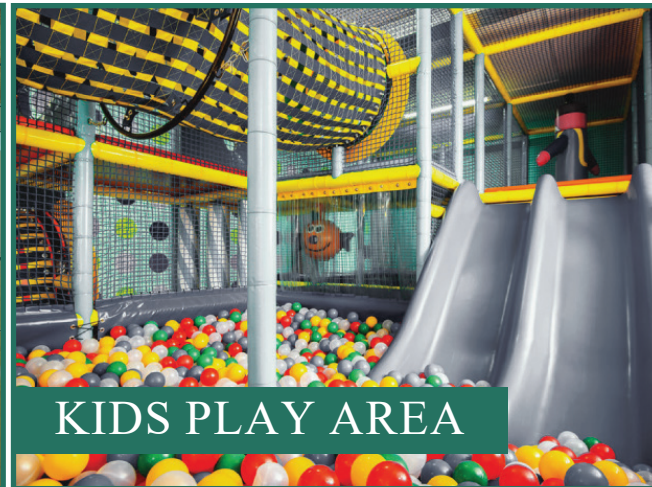
BALCONY GARDEN



GYMNASIUM



SPORTS COURT



KIDS PLAY AREA



RESTAURANT



DAY CARE CENTER



COFFEE SHOP



BADMINTON COURT



GAMING ZONE

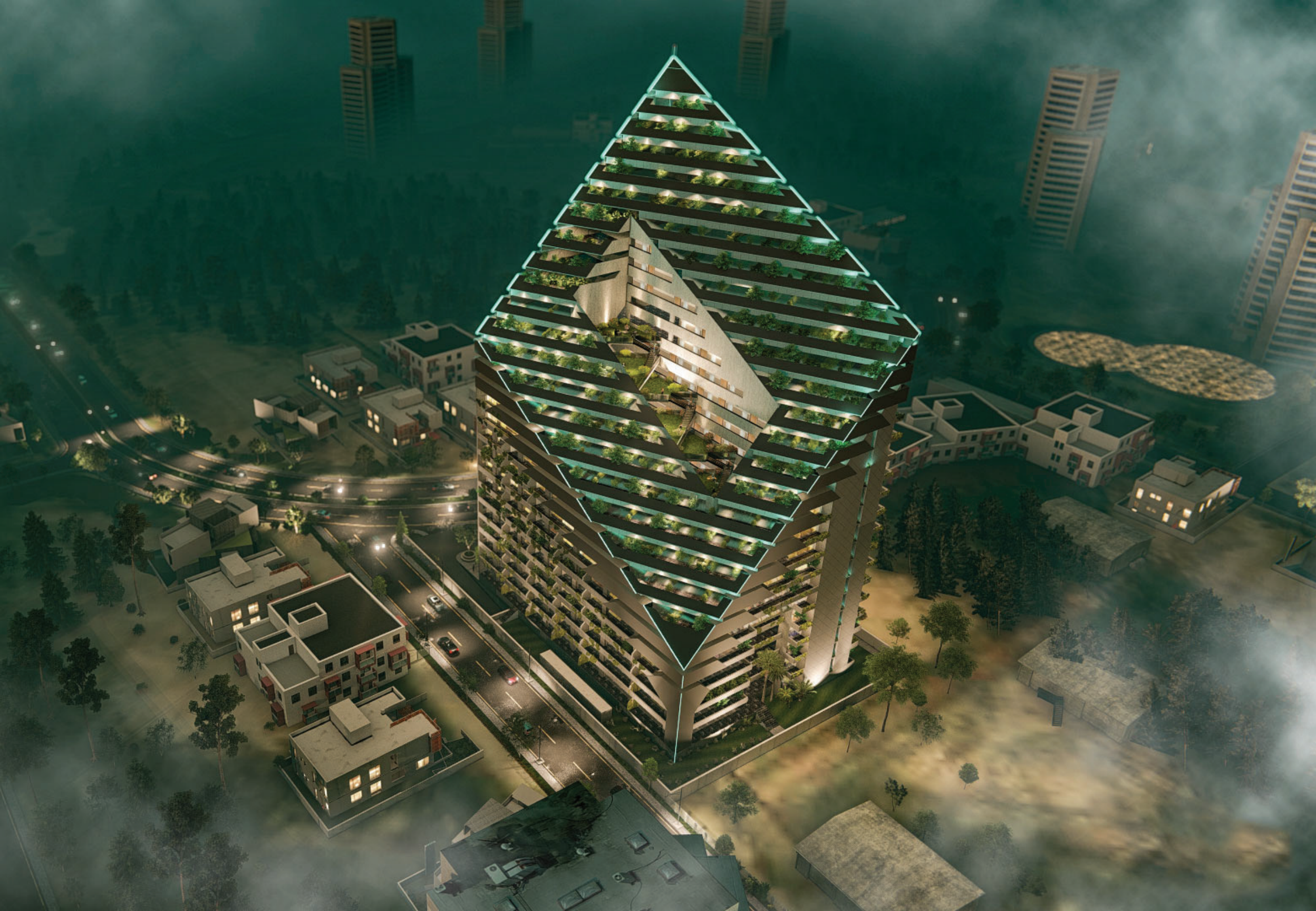


ACROBATIC STUDIO



# APARTMENTS

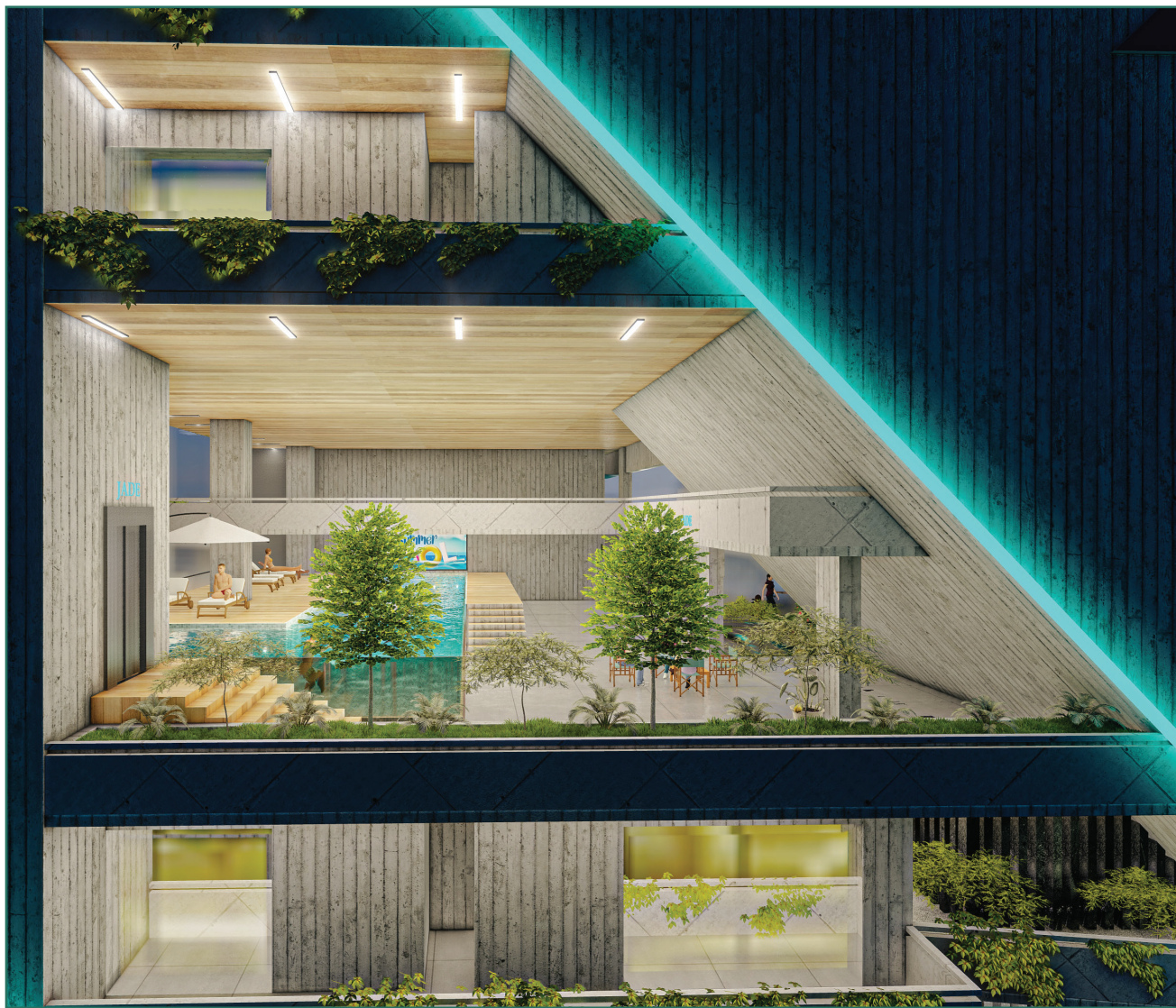
1, 2 & 3 Bedroom Apartments  
Residents of these premium residences  
enjoy striking views of the surrounding  
landscapes, as well as the utmost  
in-home comforts and conveniences.



# PENTHOUSE

Signature warmth sets this lavish lifestyle. Bright and airy interiors with stylish touches create a pleasant atmosphere.





# SWIMMING POOL

Enjoy the calmness of swimming pool by taking a dip. Spend some time by the pool, soaking up the rays and enjoying the breeze without ever having to leave your house.

# UPGRADING LIFESTYLE

Discover everything you need to start a new life or grow a smart investment.



BED ROOM



BATH ROOM



DINING





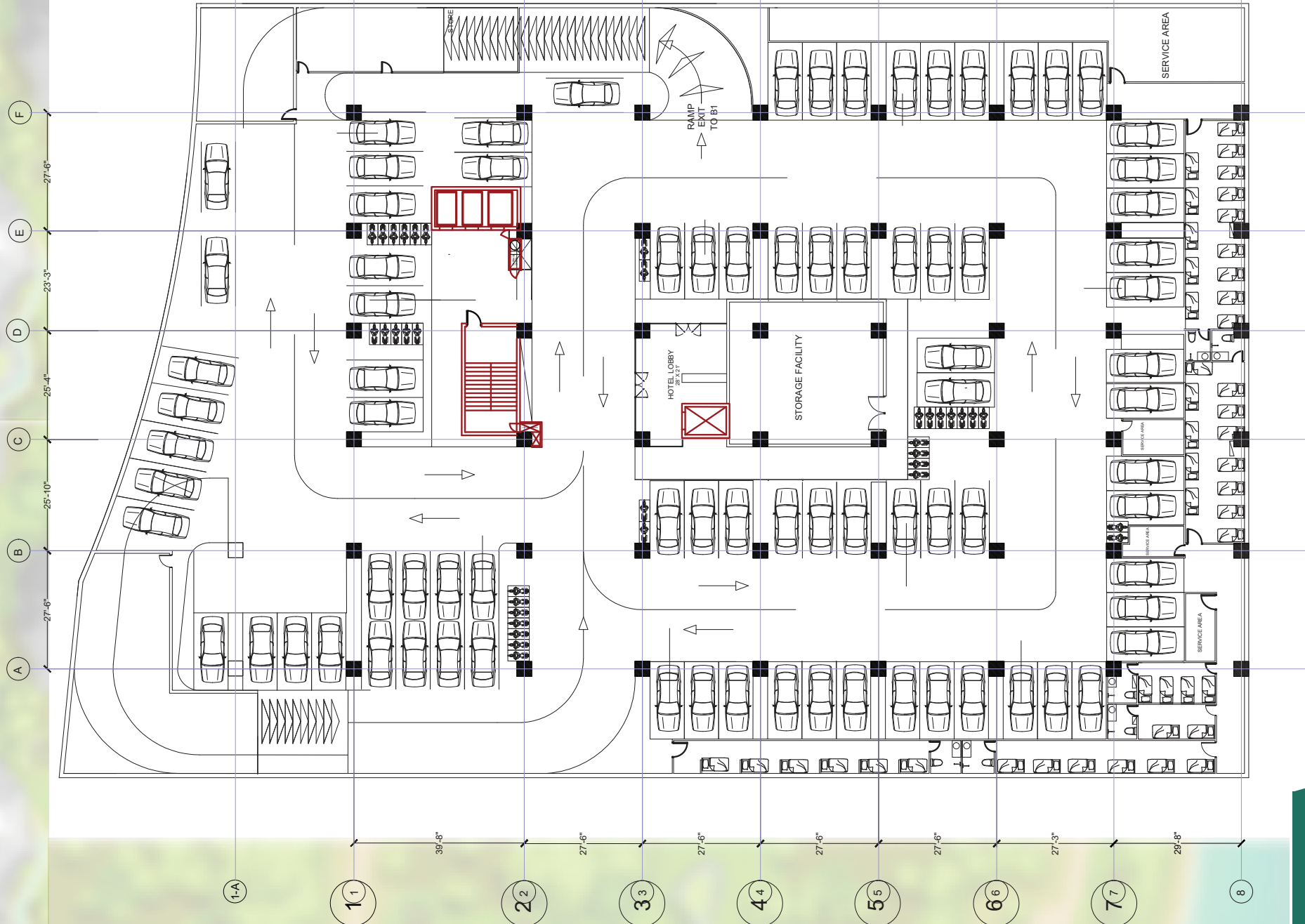


JADE

MURREE

ISLAMABAD SIRINAGAR HIGHWAY

MOTORWAY



MARGALLA HILLS

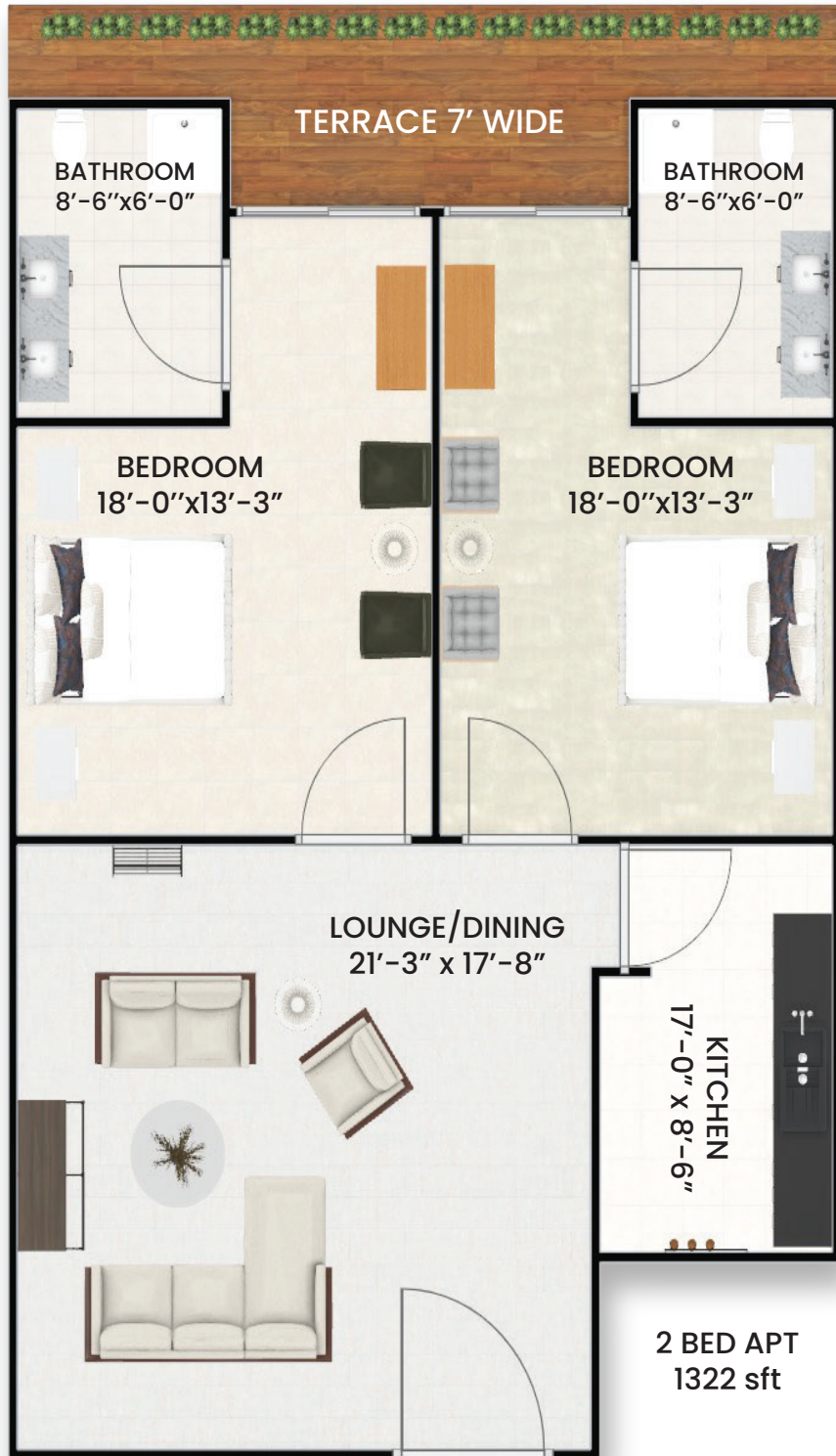
**BASEMENT 1 & 2**  
160 Cars  
63 Bikes



# 1 BED APARTMENT

Total Area layout Above 665 sft

- ONE BED APT SIZES
- 700 sft
  - 1028 sft
  - 1095sft



# 2 BED APARTMENT

Total Area layout Mentioned 1322 sft

## TWO BED APT SIZES

1245 sft

1436 sft

1332 sft



# 3 BED APARTMENT

Total Area layout Mentioned 2280 sft

## THREE BED APT SIZES

1705 sft

1973 sft

2470 sft



With a focus on the real estate industry, we are a creative marketing agency that wants to provide you a competitive advantage over your competitors, with unparalleled quality and rates. Despite our position as a marketing agency, we've maintained the nimbleness, enthusiasm and spirit of a start-up in everything we do.



# OUR PROJECTS

DELIVERING BEYOND YOUR EXPECTATIONS



# ABOUT MATRIX BUILDERS

Since we started our activities in 1999, we have successfully realized many prestigious projects and developed our own identity in Real-Estate sector.

We have made our place at the forefront of the real estate sector as a conglomerate which carries out works such as product development starting from the project stage, high-quality turnkey works including architectural constructions-productions as well as office and mall project planning, housing estate management.

We aim to create the ideal conditions for living by investing in the future and aim to add lasting values to the society we live in with every work we produce.





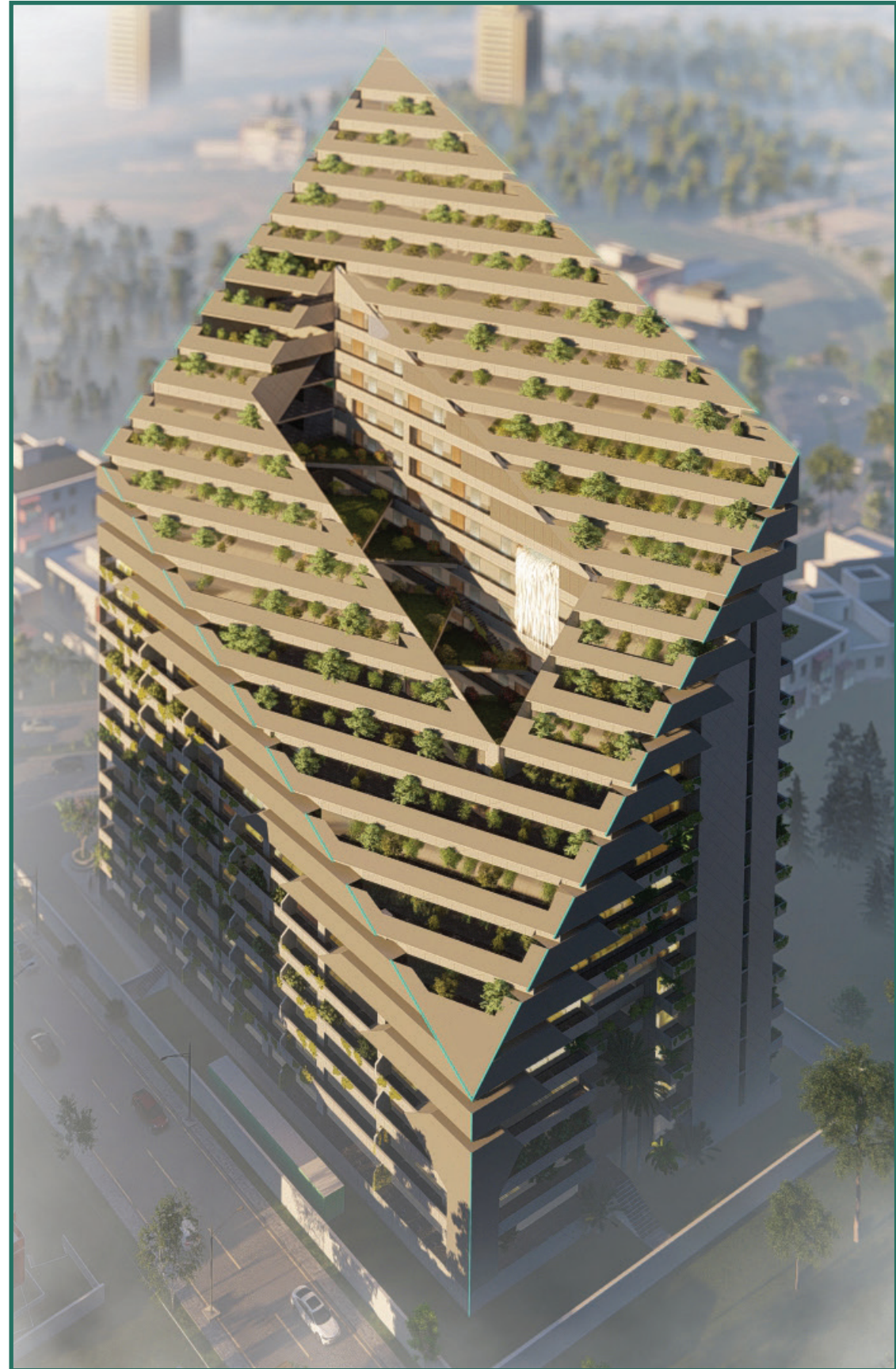


**Zafar Sialvi**  
CEO 8K Marketing  
MD Matrix Builders

# THE OWNER'S MESSAGE

Businesses are widely regarded as a significant source of economic growth and innovation since they directly impact people's lives all around the world. We believe we are the right home for investors who want to make a big difference in the lives of people, the economy, and the environment because we generate value-based possibilities.

The establishment of "Jade Heights" in sector F-18, Islamabad, is a positive step toward achieving our objectives. This project will reflect our dedication to the economic and social well-being of the local community, which we have previously stated. To take full advantage of everything Jade Heights has to offer, we hope you'll join us at Jade Heights as our community grows.





**Ch. M. Asif**  
CEO Matrix Builders  
MD 8K Marketing

## THE OWNER'S MESSAGE

I am convinced that the company's development potential will be boundless if Jade Heights can acquire the trust of its clients by providing an affluent lifestyle that exceeds their expectations.

While Jade Heights might benefit society, it can also provide a financial return for its investors. For us, the ultimate goal is always to deliver on time and to the highest possible standard, so we put our client's needs first in all we do.

It is a personal commitment to you that my team and I will do everything we can to meet and surpass your expectations.



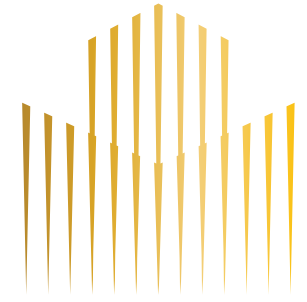
# THANK YOU

---

Matrix Builders would like to appreciate and thank all of our partners for their unending trust and determination to ensure the successful execution of this project. Through the hard work and the will to achieve this collective dream, we have been able to introduce modern quality living with the establishment of Jade Heights. We would also like to take this chance to show our gratitude to all of our customers who placed their trust in us and chose Jade Heights to start their lives on a new note – making it their home. Everyone who has shown interest and supported our project holds a great place in our hearts and we, at Matrix Builders, will work towards building an innovative approach to real estate in Pakistan.

A PROJECT OF









# JADE HEIGHTS FAISAL TOWN

Marketed By



 [eightkmarketing@gmail.com](mailto:eightkmarketing@gmail.com)  0304-111-1722  [8kmarketing.com](http://8kmarketing.com)  [8kmarketing](https://www.facebook.com/8kmarketing)

 [8k\\_marketing](https://www.instagram.com/8k_marketing)  Office # 03, Mezzanine Floor, Kashmir Plaza, D Chowk, Blue Area, Islamabad.